

Instructions to create an WebREsearch Dialer for our Courtesy Access

1. Double click the **My Computer** icon  on your desktop screen.

2. My Computer folder will open and you will see folders icons in the folder. Double click the **Dialup Networking folder**.



3. The Dialup Networking Folder will open and you will see a icon inside call **Make New Connection**. Double click the **Make New Connection** icon and enter the box that says "Type a name for the computer you are dialing" **WebREsearch Dialer** in then click **NEXT**. Your will see another screen that will ask you for the area code, press the tab key on your keyboard to move the cursor to the Telephone number box and enter the courtesy of the island you are calling from and click **NEXT** and click **FINISH**.

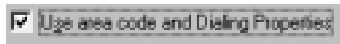


Courtesy Number for all Islands			
Oahu	Maui	Big Island	Kauai
441-0001	442-0001	934-9058 / 443-0001	246-2800

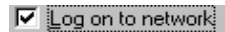
4. Your will see an icon call **WebREsearch Dialer** is create in your Dialup Networking Folder. Right click on the **WebREsearch Dialer** icon, a menu will pop up and select **PROPERTIES** using your left mouse button. Your will see a menu with four tabs on the top like this



5. You will also see a check box that says Use area code and Dialing Properties. I want you to click it to remove the check on it.



6. Now click on the **Server Types** tab and uncheck the box that says **Log on to network, NetBEUI and IPX/SPX Compatible**. Click **OK** and now you can drag the WebREsearch Dialer icon out to your Windows desktop screen by right click on the WebREsearch icon and click your left mouse button on create shortcut.



Instructions to create a WebREsearch shortcut icon on the desktop

1. Right click any blank area on your desktop, a menu will pop up, click **NEW** and then **SHORTCUT**.
2. In the command line box, type <http://www.hiinfo.net> and click **NEXT**.
3. In the next screen that says select a name for the shortcut, just type **WebREsearch** and it will override the Shortcut Connection name that is currently showing and then click **Finish**.
4. Now, you will see two icons in your desktop, one is call WebREsearch Dialer and the other is called WebREsearch. Double click on the **WebREsearch Dialer** first to make an Intranet connection to our courtesy account and then double click on the **WebREsearch** icon. When you double click on the WebREsearch Dialer icon, it will prompt your for the username and password, you will type the username and password according to the island your are calling from.

Username & Password for all Island – for WebREsearch use only				
	Oahu	Maui	Big Island	Kauai
Username	webresearch1	webresearch2	webresearch3	webresearch4
Password	mlshawaii	mlshawaii	mlshawaii	mlshawaii

Instructions to Create a shortcut icon to connect to REsearch™

For Windows 95 & 98 Users

Go to the **START** button on the bottom left of the screen

Windows 95 users:

Drag the cursor to **PROGRAMS** then **ACCESSORIES** then **HYPERTERMINAL**.

Windows 98 users:

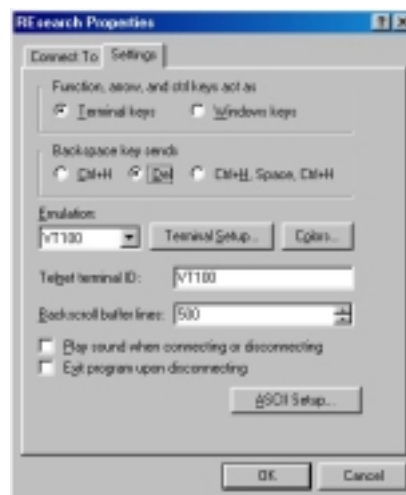
Drag the cursor to **PROGRAMS** then **ACCESSORIES** then **COMMUNICATION** then **HYPERTERMINAL**.

In the open HyperTerminal window, select the **HyperTrm.EXE** icon. A new window will pop up.
*****NT USER SKIP THIS STEP*****

Enter the "name" of the ENTRY, we suggest naming it **TELNET REsearch**, then click OK. In the next screen skip the dialup number box, and in the **Connect using:** box, choose TCP/IP (Winsock). A new box will open and in the **Host address:** box, enter **research.hawaiiinformation.com** or **research.hiinfo.net** and 23 in the Port number: box. Click OK. (Note: the box below is missing the Host address. It should show "research.hawaiiinformation.com".)



From the tool bar, click **FILE** and select **PROPERTIES**. Next, click on the **SETTINGS** tab. Change the **BACKSPACE KEY SENDS** to "DEL" and **EMULATION** to **VT100**. Click OK. You will see the following on your screen: (continue with steps 12-15 before logging on!)



Click **VIEW** and select **FONT**. Change the font to courier or **Courier new**, regular, size **11**.

Before you sign on, go to **FILE** located on the toolbar and select **SAVE**; this will save your new configuration.

Click **FILE** again and select **EXIT**. Copy your icon (**TELNET RESEARCH**) to your desktop by creating a shortcut for easy access. To create a shortcut, find the icon you just created (you may have to enlarge the HyperTerminal Program Box to find your icon). Click once to highlight the icon (don't open it), now "right-click" and select **CREATE SHORT CUT** from the drop down box. You will see that you have made a

duplicate of your original icon. Simply drag the duplicate to the desktop. Once you are ready to connect to our service, double click on your new icon. When you are CONNECTED, you will get a screen that looks like below.

```
Trying RESEARCH...Open
Username: _
```

At Username: Type in Your Username
At Password: Type in Your password

A welcome screen will be displayed, followed by a menu of our text database services. Simply select the service you wish to use.