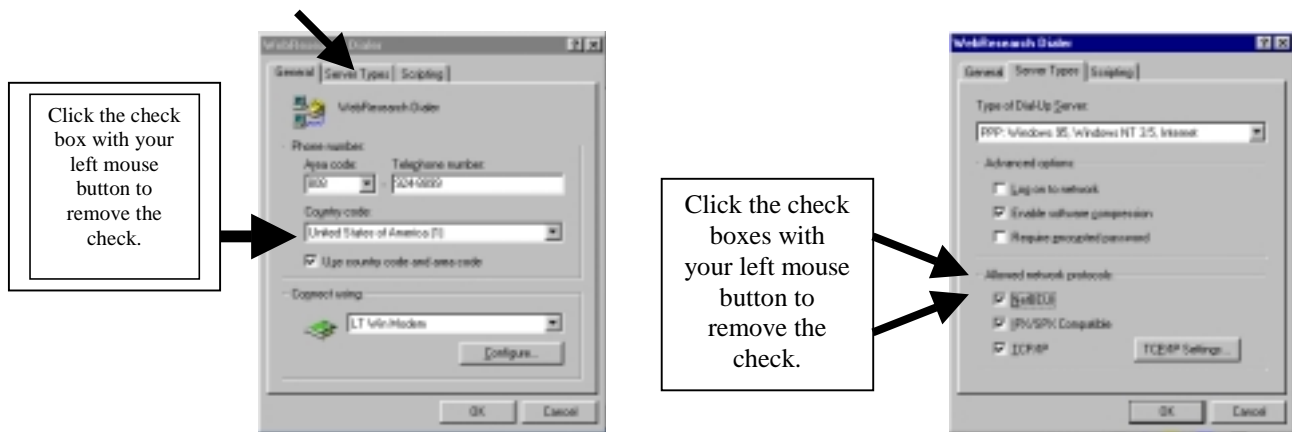


Creating a Shortcut Dialer for WebREsearch™

1. Double click the **My Computer** icon. Then open the **Dial-up Networking** folder and double click then **Make New Connection** icon. An input box will appear with the heading, **Type a name for the computer you are dialing**. In the box replace the pre-entered name with **WebREsearch Dialer** and click the button marked **NEXT**. The next screen will ask you to enter a phone number. Depending on which island you are on enter **441-0001 (Oahu)**, **934-9058 / 443-0001 (Big Island)**, **246-2800 (Kauai)** and **442-0001 (Maui)** then click the **NEXT** button and then click **FINISH** button.
2. You will then see a new **WebREsearch Dialer** icon appear in your **Dialup Networking** folder. Right click the icon (using your right mouse button) and select **Properties**. Your screen should then match the picture provided below.
3. Remove the check in the check box next to the line that reads **Use country code and area code**. Do this by clicking on the check box with your left mouse button.
4. Continue to the next step by clicking **Server Types** tab shown below.



5. In the **Server Types** tab option menu uncheck both the **NetBEUI** and **IPX/SPX compatible** check boxes by clicking on each check box with your left mouse button. Continue by clicking **OK**.
6. Now move the **WebREsearch Dialer** icon to your desktop by pointing your left mouse button on the **WebREsearch Dialer** icon and holding it down. Then move your mouse until the icon is dragged above the desktop.
7. Congratulations! You now have an icon on your desktop called **Dialup WebREsearch**. To use this dialer icon all you have to do is double click on the icon and a box will pop up. In the box enter your username and the password for the island that you are calling from then click the **Connect** button to connect into WebREsearch™.

If you experience problems creating the WebREsearch™ dialer, please call our tech support line (1-800-628-3121).

Instructions to create a WebREsearch shortcut icon on the desktop

1. Right click any blank area on your desktop, a menu will pop up, click **NEW** and then **SHORTCUT**.
2. In the command line box, type <http://www.hiinfo.net> and click **NEXT**.
3. In the next screen that says select a name for the shortcut, just type **WebREsearch** and it will override the Shortcut Connection name that is currently showing and then click **Finish**.
4. Now, you will see two icons in your desktop, one is call WebREsearch Dialer and the other is called WebRESearch. Double click on the **WebREsearch Dialer** first to make an Intranet connection to our courtesy account and then double click on the **WebREsearch** icon. When you double click on the WebREsearch Dialer icon, it will prompt your for the username and password, you will type the username and password according to the island your are calling from.

Username & Password for all Island – for WebREsearch use only				
	Oahu	Maui	Big Island	Kauai
Username	webresearch1	webresearch2	webresearch3	webresearch4
Password	mlshawaii	mlshawaii	mlshawaii	mlshawaii

Instructions to Create a shortcut icon to connect to REsearch™

For Windows 95 & 98 Users

Go to the **START** button on the bottom left of the screen

Windows 95 users:

Drag the cursor to **PROGRAMS** then **ACCESSORIES** then **HYPERTERMINAL**.

Windows 98 users:

Drag the cursor to **PROGRAMS** then **ACCESSORIES** then **COMMUNICATION** then **HYPERTERMINAL**.

In the open HyperTerminal window, select the **HyperTrm.EXE** icon. A new window will pop up.

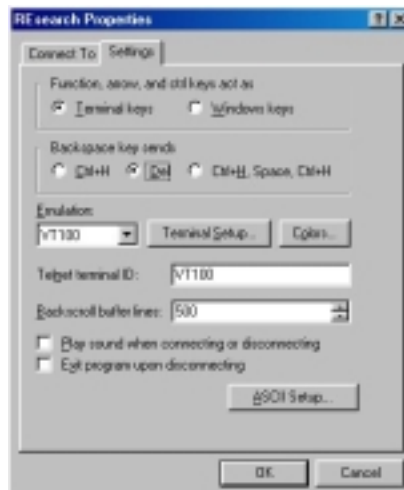
*****NT USER SKIP THIS STEP*****

Enter the "name" of the ENTRY, we suggest naming it **TELNET REsearch**, then click **OK**. In the next screen skip the dialup number box, and in the **Connect using:** box, choose **TCP/IP (Winsock)**. A new box will open and in the **Host address:** box, enter **research.hawaiiinformation.com** or **research.hiinfo.net** and 23 in the **Port number:** box. Click **OK**. (Note: the box below is missing the Host address. It should show "research.hawaiiinformation.com".)



From the tool bar, click **FILE** and select **PROPERTIES**. Next, click on the **SETTINGS** tab. Change the **BACKSPACE KEY SENDS** to "DEL" and **EMULATION** to **VT100**. Click **OK**. You will see the

following on your screen: (continue with steps 12-15 before logging on!)



Click **VIEW** and select **FONT**. Change the font to courier or **Courier new**, regular, size **11**. Before you sign on, go to **FILE** located on the toolbar and select **SAVE**; this will save your new configuration.

Click **FILE** again and select **EXIT**. Copy your icon (**TELNET RESEARCH**) to your desktop by creating a shortcut for easy access. To create a shortcut, find the icon you just created (you may have to enlarge the HyperTerminal Program Box to find your icon). Click once to highlight the icon (don't open it), now "right-click" and select **CREATE SHORT CUT** from the drop down box. You will see that you have made a duplicate of your original icon. Simply drag the duplicate to the desktop.

Once you are ready to connect to our service, double click on your new icon. When you are **CONNECTED**, you will get a screen that looks like below.

```
Trying RESEARCH...Open
Username: _
```

At Username: Type in Your Username
At Password: Type in Your password

A welcome screen will be displayed, followed by a menu of our text database services.
Simply select the service you wish to use.