

How to...

Prevent QuickTime from Opening Tax Map Files

The following presumes that you have subscribed to our tax maps service and are using a computer with Microsoft Windows installed.

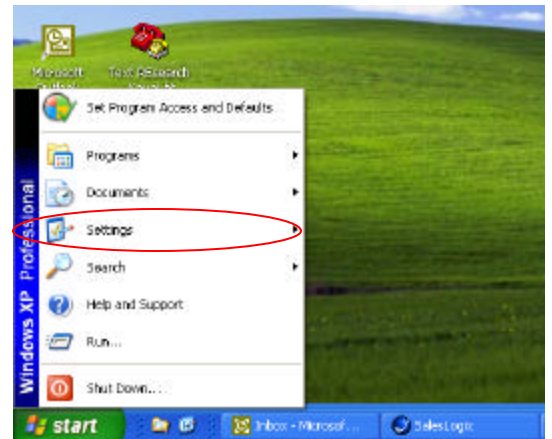
1

Click the **Start** button



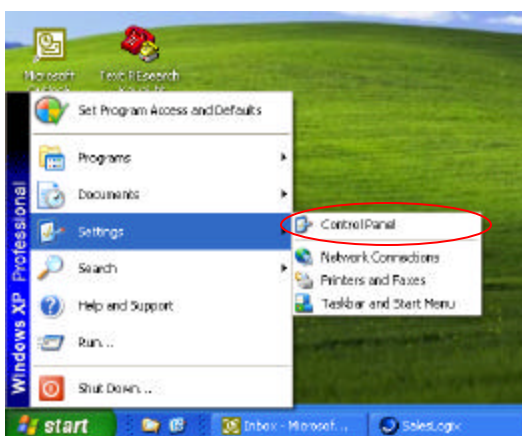
2

Move the mouse pointer to **Settings**



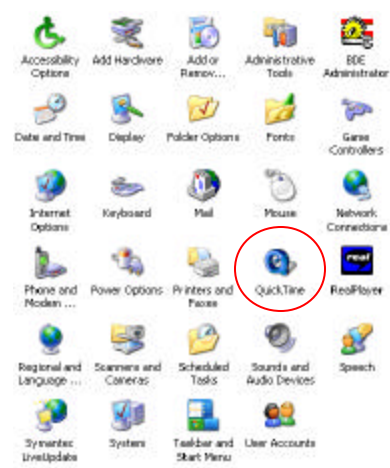
3

Click **Control Panel**



4

Double click **QuickTime**



Reminder...

As of March 2003, REsearch is only compatible with versions 5.5 and 6.0 of Microsoft Internet Explorer.

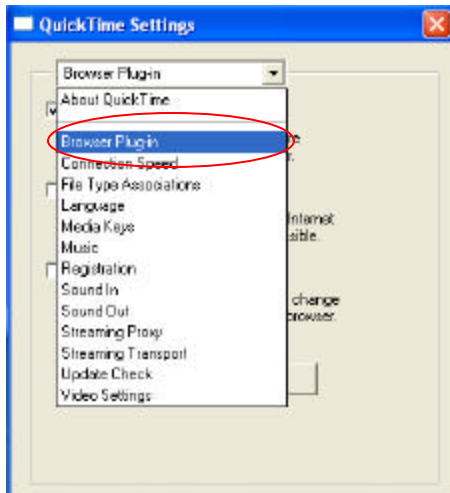
Continued - How to...

Prevent QuickTime from Opening Tax Map Files

The following presumes that you have subscribed to our tax maps service and are using a computer with Microsoft Windows installed.

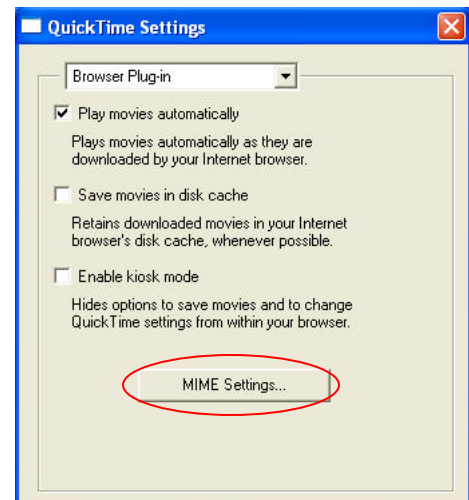
5

From the list box at the top of the **QuickTime Settings** window, select **Browser Plug-in**



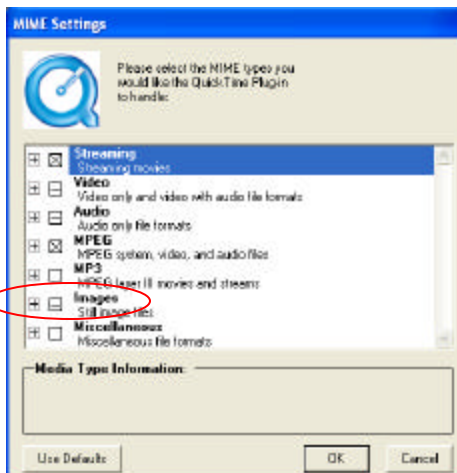
6

Click **MIME Settings...**



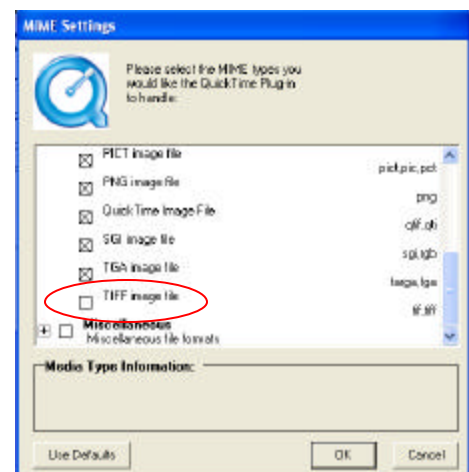
7

To the left of **Images**, click the + sign



8

Scroll down the list and uncheck **TIFF image file**



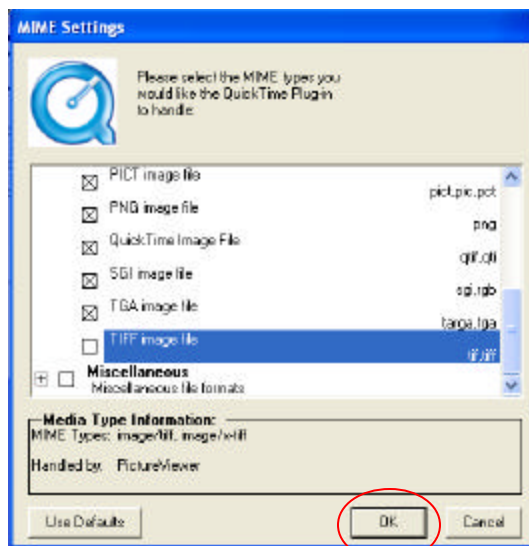
Continued - How to...

Prevent QuickTime from Opening Tax Map Files

The following presumes that you have subscribed to our tax maps service and are using a computer with Microsoft Windows installed.

9

Click the **OK** button. At this point, QuickTime "should" stop opening tax maps files. If the new program that opens the tax maps files proves inadequate, please refer to the Tech Note titled **How to Associate Tax Map Files with a Particular Program**.



Reminder...

As of March 2003, REsearch is only compatible with versions 5.5 and 6.0 of Microsoft Internet Explorer.