

Windows 95 & NT users:
follow steps 1 - 19.

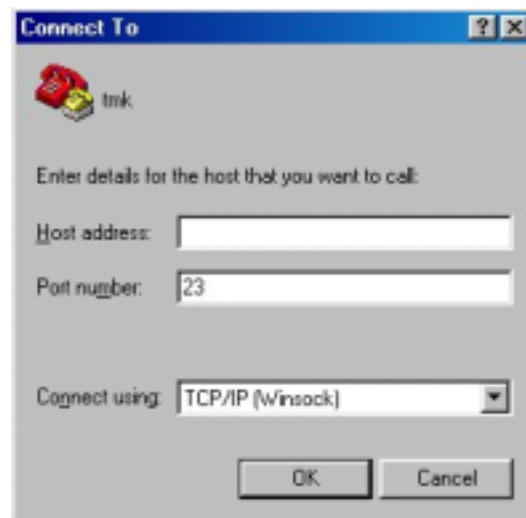
Windows 98 users:
follow steps 10 – 19.

Instructions on Downloading and Installing Hyperterminal Private Edition version 4.0 Telnet Program

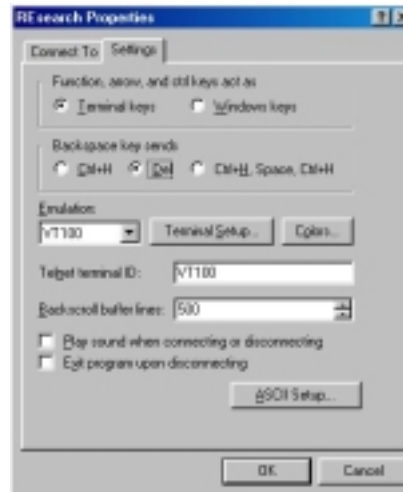
1. Connect to the Internet by dialing into your ISP.
2. Go to the Hilgraeve web site at <http://www.hilgraeve.com>.
3. Move the scroll bar down on the lower right corner of your screen and click on the link that says [HyperTerminal Private Edition](#) (on the bottom of the page).
4. Now click the link that say "[Download & Install HTPe](#)"
5. Scroll down the web page and fill out the information form and click **SUBMIT** from the bottom of the page.
6. On the new page, scroll down until you see three FTP sites. Click on the second or third one ("Utah FTP Site" or "Michigan Site").
7. It will prompt you with a **save file as box**. Click **OK** and then click **SAVE** button to save the file on your hard disk. Remember where you save the file, because you will need it to install the HyperTerminal telnet program.
8. Locate the saved file ("htpe4.exe") by clicking **START, PROGRAMS, WINDOWS EXPLORER**. Double click on the "htpe4.exe" file to [install the Hyperterminal program](#) and follow the instructions on the screens.
9. After you install the program, follow the steps below to create a telnet short which will connect you to our REsearch services.

Instructions to Create a shortcut icon to connect to REsearch™

10. Go to the **START** button on the bottom left of the screen
11. **Windows 95 users:**
Drag the cursor to **PROGRAMS** then **ACCESSORIES** then **HYPERTERMINAL**.
Windows 98 users:
Drag the cursor to **PROGRAMS** then **ACCESSORIES** then **COMMUNICATION** then **HYPERTERMINAL**.
12. In the open HyperTerminal window, select the **HyperTrm.EXE** icon. A new window will pop up.
*****NT USER SKIP THIS STEP*****
13. Enter the "name" of the ENTRY, we suggest naming it **TELNET REsearch** , then click OK. In the next screen skip the dialup number box, and in the **Connect using:** box, choose TCP/IP (Winsock). A new box will open and in the **Host address:** box, enter **research.hawaiiinformation.com** or **research.hiinfo.net** and 23 in the **Port number:** box. Click OK. (Note: the box below is missing the Host address. It should show "research.hawaiiinformation.com".)



- From the tool bar, click **FILE** and select **PROPERTIES**. Next, click on the **SETTINGS** tab. Change the **BACKSPACE KEY SENDS** to “**DEL**” and **EMULATION** to **VT100**. Click OK. You will see the following on your screen: (*continue with steps 12-15 before logging on!*)



- Click **VIEW** and select **FONT**. Change the font to courier or **Courier new**, regular, size **11**.
- Before you sign on, go to **FILE** located on the toolbar and select **SAVE**; this will save your new configuration.
- Click **FILE** again and select **EXIT**. Copy your icon (**TELNET RESEARCH**) to your desktop by creating a shortcut for easy access. To create a shortcut, find the icon you just created (you may have to enlarge the HyperTerminal Program Box to find your icon). Click once to highlight the icon (don't open it), now "right-click" and select **CREATE SHORT CUT** from the drop down box. You will see that you have made a duplicate of your original icon. Simply drag the duplicate to the desktop.
- Once you are ready to connect to our service, double click on your new icon. When you are **CONNECTED**, you will get a screen that looks like below.

```
Trying RESEARCH...Open
Username: _
```

At Username: Type in Your Username

At Password: Type in Your password

- A welcome screen will be displayed, followed by a menu of our text database services. Simply select the service you wish to use.

Additional Points about Hyper Terminal

*Key points: *Refer to your HyperTerminal HELP manual for complete details. HyperTerminal is a Microsoft Windows program.

PRINTING:

In HyperTerminal you have the ability to use your mouse to click /drag / and block what you want printed. Should you hit the PRINT icon or file PRINT, HyperTerminal's buffer will print the last 500 lines of data. We suggest you click / drag / and block the items you want printed. If you plan on doing a large run with a lot of data, elect to use the CAPTURE TO PRINTER OPTION. To do this, click on TRANSFER (located on the tool bar), then select **CAPTURE TO PRINTER** to send items to the printer as it is scrolling (information will probably not print until, you turn off the capture to printer feature). To turn off printer, click on TRANSFER, CAPTURE TO PRINTER once more (Clicking toggles the printer on/off).

DATA CAPTURE ALTERNATIVE:

To Capture to a FILE, Click **TRANSFER** (located on the toolbar), and select **CAPTURE TEXT**. Name the file, click **START**. To turn off capture mode, click on **TRANSFER, CAPTURE TEXT** and **STOP**.